



7V-2 QT. BAKER-



7FL-10" PLATE-

7F-9" PLATE-

7G-7" PLATE-

7E-5" SAUCER-



7D-60 OZ. PITCHER-



7W-3 QT. BAKER-



7B-SUGAR WITH LID-



7A-6 OZ. CREAMER-



7C-CUP-



7M-14 OZ. MUG-



7CL-8 OZ. MUG-



7XO-8 OZ. FRUIT-



7U-10 OZ. BAKER-



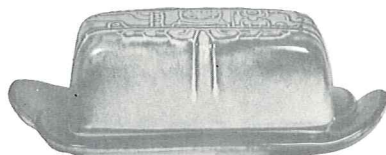
7QS-13" STEAK PLATTER (SHALLOW PLATTER)-



7HS-SALT & PEPPER-



7X-14 OZ. CHILI-SOUP-



7K-BUTTER DISH-



7Q-13" DEEP PLATTER-



7XL-20 OZ. SALAD-



7PS-9" TRAY-



7FC-15" CHOP PLATE-



7N-1 QT. VEGETABLE BOWL-



7T-6 CUP TEAPOT-



7P-17" DEEP PLATTER-



7J-2 CUP TEAPOT-